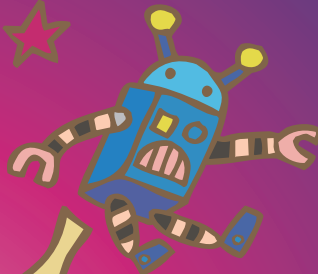
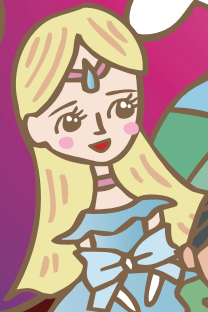
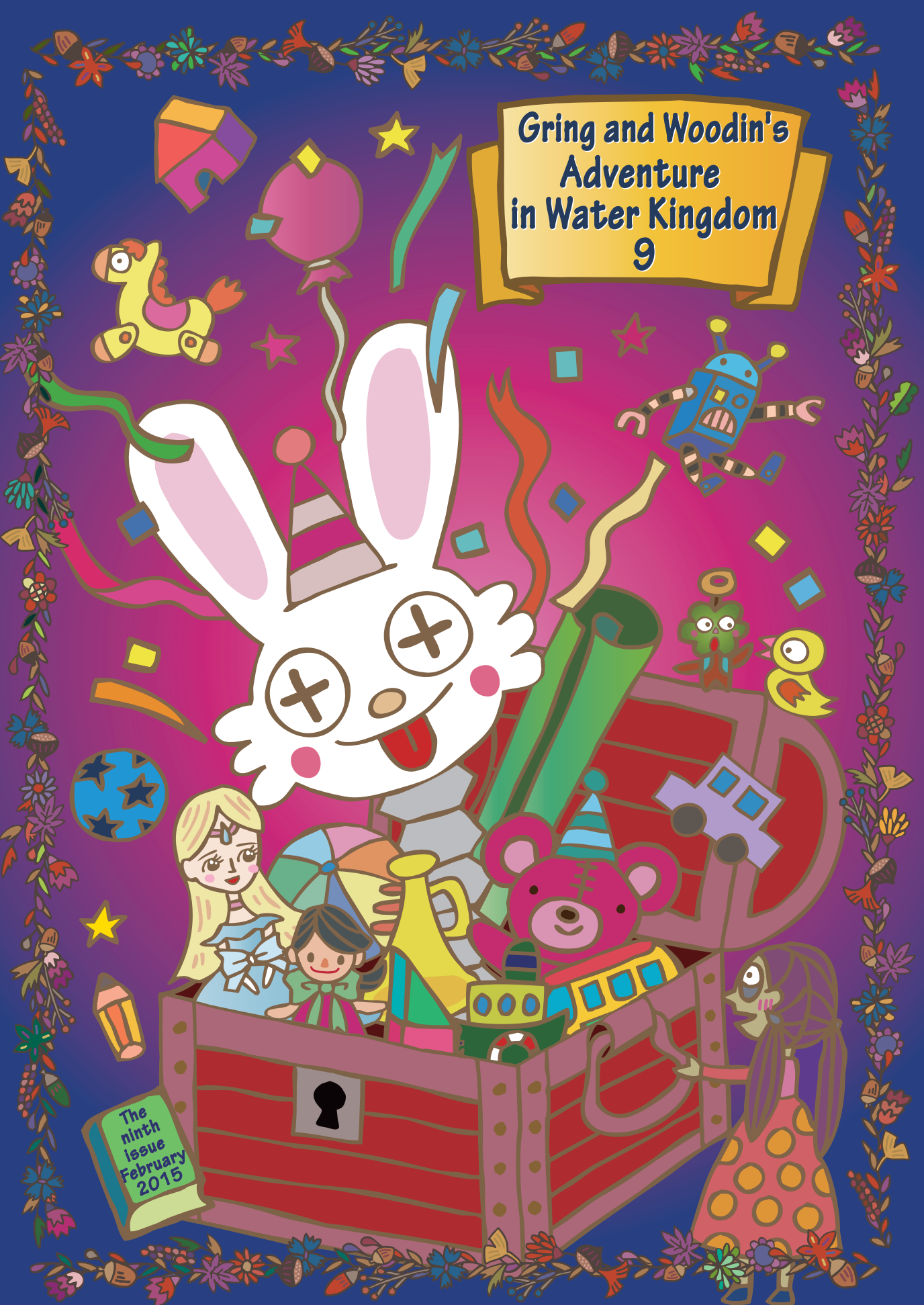


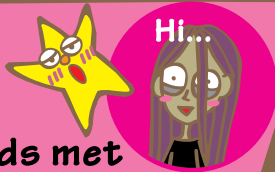
Gring and Woodin's
Adventure
in Water Kingdom
9



The
ninth
issue
February
2015



The story so far



Gring and his friends met Majolaine the witch on the way to the castle. They also happened to befriend the happy star. Majolaine decided to come with Gring to the castle to ask about the reason of "Watch for the Witch" warning.

I believe the entrance to the castle is around here



You can read the previous issues of this comic on the website of the Asahi Glass Foundation. (You can find the URL on the final page).



Oh, what are they doing?

We are checking for witches. You cannot enter the castle in an outfit like that.



Aww... What shall I do?!

Nooooo

Ima-chan... Any idea?



There are many clothes in this garbage bag! Let's use this!

Many of them are still wearable!



Matching this and that....!



You look pretty!

Ta-da!

Ahem



Well, there is a lot of garbage... They still look usable

Yes, it indeed is wasteful. How much waste do you think is discarded in the world?



The waste worldwide is very large in quantity! By country, Japan discharges the second most waste only after the U.S., followed by Russia and Germany. In Japan, a person discharges 410 kilograms per year according to calculations.

Reference: Ministry of the Environment of Japan "2005 White Paper on a Sound Material Cycle Society"



So use your clothes affectionately! It is essential that if you don't need some clothing, exchange it with your friends or bring it to a used store so that they don't become garbage.



Thump Thump

Now! Let's go!



Hm?
What are you?

I'm Ima-chan!
I am invited to
the Kingdom in
lieu of Dr. Imai.
They are
my friends

I see.
Now let me
check you!

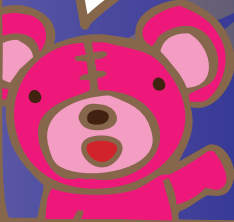


Flash!

I see the
happy star!
Princess will
be pleased!
You can enter!

Flash!

Ohh!!



You are
popular

Let's go!



It's inside
a building,
but we see
a lot of plants!



Yes. As Dr. Imai
once told me,
the plants have
an effect to
calm you!

They give us not only
oxygen but also peace
of mind which is called
forest therapy!





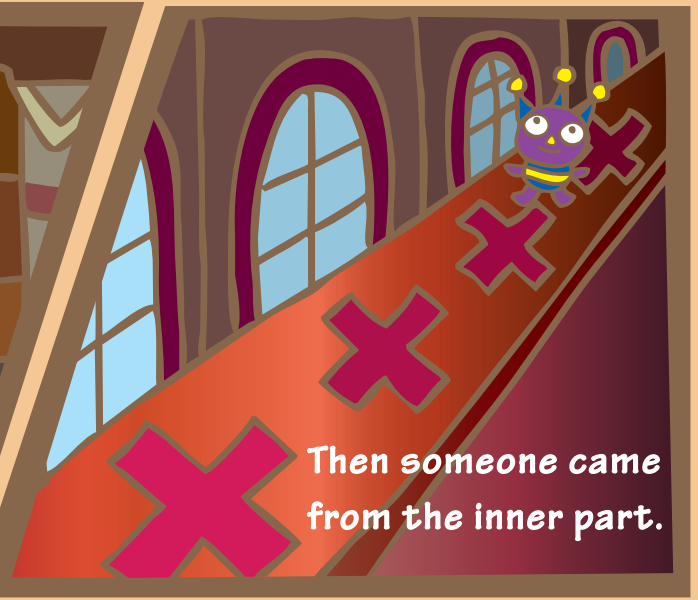
It makes sense because we feel good in the forest!



Imai Dome had a lot of plants, and the air was very fresh there! We must cherish the plants!



We are going. Don't go astray.



Then someone came from the inner part.



Hello! I am a servant of the Princess! Let me guide you to her room!

Nice to meet you!



Now we are very busy preparing for the birthday party for the princess!

...



I think I have seen this kid before... Or am I just getting it wrong?...

Hmmm...

?



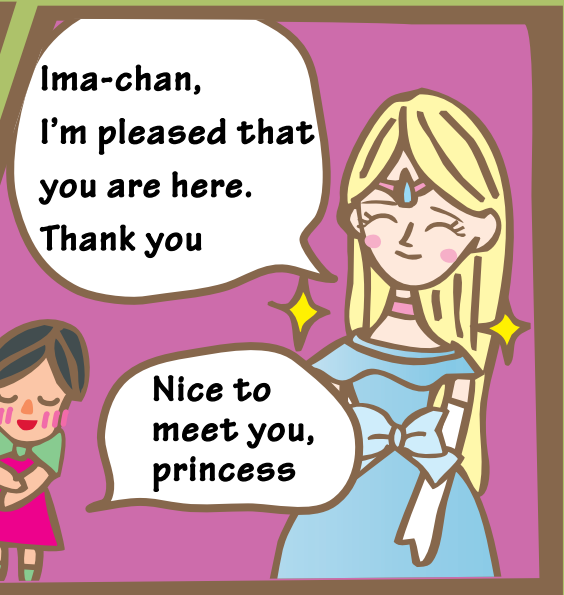
Princess, Ima-chan is here!

Knock.

knock



Thank you



Ima-chan, I'm pleased that you are here. Thank you

Nice to meet you, princess



I am Gring! This is my friend Woodin



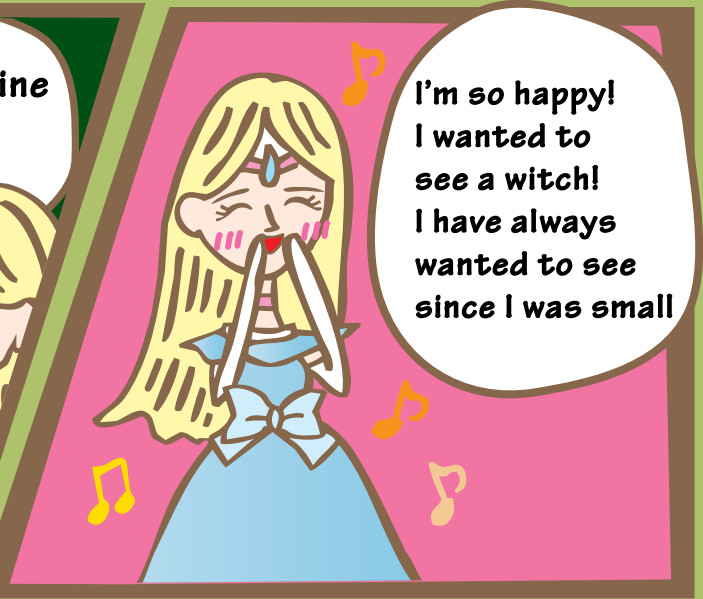
Welcome to Water Kingdom. Oh... Who is that person?

Stare



I am Majolaine the witch...
Um...

Oh!!



I'm so happy!
I wanted to see a witch!
I have always wanted to see since I was small



Really?... But we see the witch warning in the town...

why?



I know. I'm sorry. Walwarl, my personal attendant tried to separate you from me as I am interested in witches...



I know Walwarl is just working for the good of the Kingdom, but...

He sounds strict...



Princess. Mizuneko was caught by the monster! We must go to rescue him right away...

Oh my!

Princess?
Open the door!



**Rat-
Tat**



Oh!
It's Walwar!
What shall I do?



Is there anyone
with you?



Hide
somewhere!



Oh, no.
Oh, no.

Aww
ww!



Sob...



What is Walwar! like?
Can Gring and
his friends rescue Mizuneko?!



**To be
continued ...**

The next issue will be published sometime around April

**Gring and Woodin's Adventure
in Water Kingdom 9
February 2015, The Asahi Glass Foundation**

