

Gring and Woodin's  
Adventure  
in Water Kingdom  
7



The  
seventh  
issue  
October  
2014



# The story so far

Gring and his friends splashed into the Magic Spring that leads to the Water Kingdom. There was a big door to the Kingdom and mermaids protecting the door. They were about to enter the Kingdom at last. But there was a threatening shadow sneaking up behind them.



Wow, it's a huge door!



Stop right there!  
All of you!!

What!?



Come on, Mizuneko!  
Who are they? You shall not enter the Kingdom without my permission!

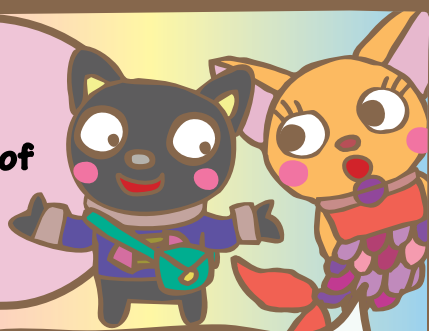


Mizugyon!



You can read the previous issues of this comic on the website of the Asahi Glass Foundation. (You can find the URL on the final page).

As a matter of fact ...



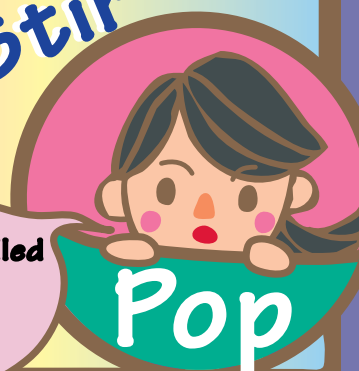
Ah, Dr. Imai has just contacted us!  
She was talking about some Ima-chan ...

Suddenly, Mizuneko's bag started to stir.



Stir, Stir

Someone called my name for help?

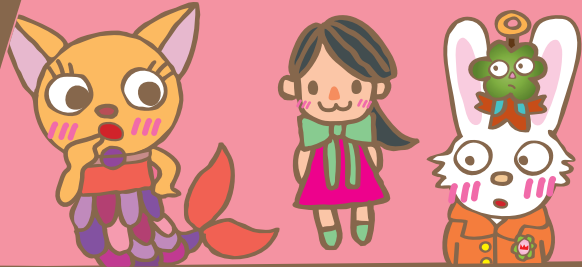


Pop

I'm Ima-chan!  
I was invited to  
the Kingdom in  
lieu of Dr. Imai.  
They are my  
friends.



Oh! So you are Ima-chan,  
the doll of wisdom!  
Now let's see if you can  
answer this quiz!



How much of  
your father's body consist of water?

From the leaflet for the promotion campaign "The Lesson on Drinking Water for Your Health" on the MHLW (Ministry of Health, Labour and Welfare, Japan) webpage "Drink Water for Your Health"

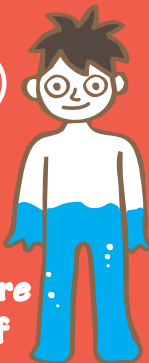


①



Much less  
than half

②



A little more  
than half

③



Almost  
all

Let's think  
about it!

A baby's body contains  
the most water and the  
content decreases as  
he/she gets older



Water content  
of a baby is  
much more  
than half



That of a  
grandma is  
about half



If a human cannot drink water,  
he/she may die in just 3-4 days!  
So water is important for us!



So the answer is 2!



Wow!

Correct! As good as advertised!  
Now I open the door for you!



Be aware of the monster!

Mizugyon opened the door.



Please go in

Please, Mizuneko!  
I'm scared!  
After you!



.....

It was then something appeared behind Mizugyon ...



.....

Loom

You should go already!  
... Huh??



It can't be!



What?

Hehehehe!

It's the monster!  
Run!!

My gosh!!

Toss!

Toss!

When the monster was about to attack ...  
Mizugyon countered him without hesitation!

Whack  
Whack  
Mizugyon Kick!!  
Take it!  
Take it!

Awww, what shall I do?

Mizugyon is amazing!

The monster got dizzy

Please come save us!  
Quickly!

Mizugyon made a wish on her necklace.



The necklace started to glow.



Then something came swimming at them, from far way.

Something comes swimming. What's that?



Now, quickly!  
Another monster can be approaching us!  
Go on his back.  
Take care!

Kyul

Dolmie,  
the messenger of mermaids



Hurry!

Gring,  
ride now!

Alright!



I'm scared to go into the door!

Kyul



Oh my!  
It's so fast!!!

Gring and his friends clung to Dolmie as they almost fell for several times.

When Dolmie popped his head,  
they found themselves in a well.



Dolmie went back  
into the well after  
dropping his  
passengers.  
Thank you!  
You saved us!

Kyul  
Kyul



Phew... we are safe now!  
I'm a bit concerned about  
Mizugyon, but she should  
be okay...huh?

Mizuneko!



Mizuneko is  
not here!!  
Where are we?!

You  
crybaby!



Hmm?

Crying won't  
change anything!

Ima-chan!  
I'm glad  
you are alright!

Well,  
I dropped off  
of Mizuneko's  
bag!



I guess Mizuneko was caught by the monster!  
They almost caught me, too!  
I grabbed something in desperation,  
which turned out to be your clothes.



Now calm down!  
We must see the princess to help Mizuneko.



This path should lead to the castle!



Okay! Let's go!

Yes!!



Let's go quickly!



To be continued...

The next issue will be published sometime around December

Gring and Woodin's Adventure  
in Water Kingdom 7  
October 2014, The Asahi Glass Foundation

