

Gring and Woodin's Adventure in Water Kingdom 6



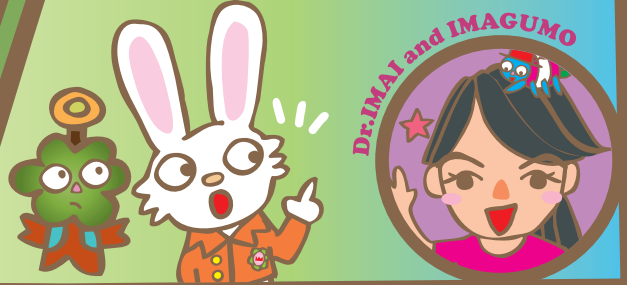
The sixth
issue
August 2014

The story so far

Gring and his friends finally met Dr. Imai, and she handed them Ima-chan, a doll that has Dr. Imai's knowledge.

They learned that there are sick plants just like Woodin, and then they headed towards the Water Kingdom to identify the cause.

Mizuneko!
We are coming to the Water Kingdom with you!
Dr. Imai told us that Woodin's complexion is something to do with the kingdom!



Dr. Imai: Doctor of nature. She examined Woodin.

So, how do we get to the Water Kingdom??



We will take the Forest Fairy Bus!
The atmosphere here is very clean.
I'm sure there are fairies!
Let's find them!

You can read the previous issues of this comic on the website of the Aeahi Glass Foundation. (You can find the URL on the final page).

Gring and his companies started to look for forest fairies.

Where are they?



Giggle...

Huh?
I can't hear it!

Oh! I heard a giggle!





Hey!
Mizuneko.
What are you
doing here?

Hum



It's him,
of all fairies...

Ah,
Morrie...

Mizuneko!
Whom are you
talking to?

Yo!



Morrie, they are Gring
and Woodin.
They cannot see you.
Do you have that
nut chocolate?

Humph!
We don't reveal
ourselves
thoughtlessly!
There are many fairy
hunters out there!



Where is he??

Thrilled!!!

Huh? The budge...
Isn't that Crest
of Friend!?



Tell me, already you are
friends of Kawajiii!
Then it's a different story.
Mizuneko, let them eat this!

Ta-da!



It's bitter...

Wow!
I see him!

I'm Morrie,
the forest
fairy!

Now Morrie,
is there any bus stop
for the fairy bus
around here?



I see! You are thinking
of getting a fairy bus
ticket from me, aren't you?
I'm not giving it away for free!



You mean...
a quiz?
You have always
liked to
play quiz...

Q How much forest
decreases every year
on the earth?

Source: Forest Q&A on the MCA website
Children Forest Museum
(The data of reduction is based on
2000-2005 statistics)



- ① Equivalent to 2 Hawaii Islands ② Equivalent to 4 Hawaii Islands ③ Equivalent to seven Hawaii Islands

Hawaii Island is the greatest among
the Hawaiian Islands! Having
mentioned the large size of the
Big Island, the world forest
is decreasing at an astonishing
rate of larger area than the
entire Hawaii Island in two months.



A bit more
than 1



1.2.3.4...

So that means...
More than three
islands in six months!
Since there are
12 months in a year...

It makes seven.
The answer
is (three)!



Correct! Very large size, isn't it?

If the forest decreases, the plants and animals living there will

lose their home

It's a pity



Well, I'm bringing you to the bus stop!

Look! An owl!

Yup! This forest is rich!



Do you know that owls in a forest are proof of the richness of the forest? In a rich forest, there are many insects.

There are also small animals, including rats and squirrels, that feed on those insects.

Owls feed on those animals!

Therefore, an owl is proof of a rich forest!

Here we are

They arrived at a big tree.



I am the king of the night forest!

Morrie pulled an ivy vine

Yank!



... to bring out a bus stop.

Rustle

Mori no Yousei Buss

Hiding Place
of Fairies,
the bus stop

This is the ticket!
The bus will arrive soon

Thanks!



They waited for a while
Then fallen leaves started
to rustle and
trees to shake.

The sign
of arrival!



Whoa!!



A bus looks like
a caterpillar came
out of the ground!

Forest Fairy Bus

Hey, customers!
Get on quickly!
We are leaving soon!



Hurry!
Let's get on!



Bye!
Don't forget to
get off at Firefly
Shooting Star!



tokotokotokotoko



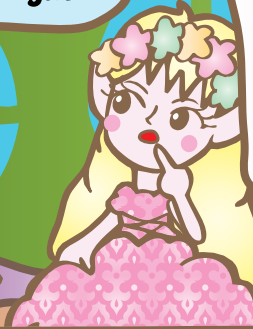
Hello.
My name is Lillian the
flower fairy! You don't
look like fairies...
What are you?



Hi. I am
Mizuneko,
a gatekeeper
of the
Water Kingdom



Water Kingdom!
It's a beautiful
country, but they
are having troubles
with monsters
nowadays!
I heard that the
monsters are ...



The next stop is
Dream Flower Garden

Oh, I have to go!
See you!

What was
she saying?



That fairy ...
I think she was about to
say something ...

Hmm ...



The next stop is
Firefly Shooting Star

Gring, come on!
Let's get off!

... ?

...

Okay!
Let's go!

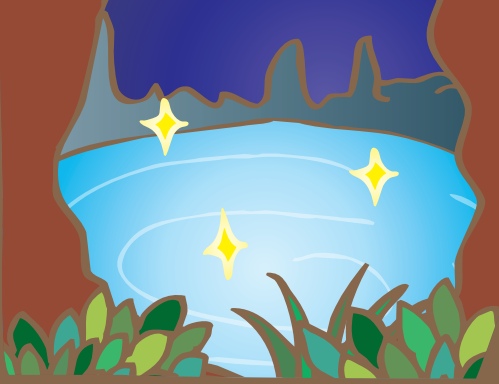


See
you!

Yes ...



After a while of walking,
they came across with
a beautiful spring.



Ta-da!

Looks beautiful.
What is it?



By applying this
instant Water
Kingdom Mix



The color of
the spring changed.



Now! Let's dive into
the spring!
Put the oxygen candy
into your mouth!



It works for a
short time only!!
Come quickly!

O ... Okay!



Splash

Gring and Woodin also dived into the spring.

Ya!

Splash

BUKUBUKU...



BUKUBUKU...

Gring!
We can breathe!



Wow!
Mermaids?



Yes! They are
guarding the door to
the Water Kingdom.
We are almost there.

Commemorating of the arrival
at the Water Kingdom!

Spot the differences!

Gring and his friends are playing in a barbecue park.
There are **eleven** differences between the two pictures!



Hint: Six of eleven are things
you shouldn't do in a park!





The answers for the spot the differences game

1. Kawajii doing graffiti on a signboard;
2. Kota making a large sound;
3. Kappa littering;
4. Gring having dumplings instead of meat;
5. King of Kappa wearing a straw hat instead of crown;
6. The flower near the King of Kappa having been changed into litter;
7. Kappa throwing away his juice;
8. Morrie not wearing his cap;
9. Bonfire;
10. Running water;
11. Squirrel holding a watermelon.

The next issue will be published sometime around October

**Gring and Woodin's Adventure
in Water Kingdom 6
August 2014, The Asahi Glass Foundation**

Designed by
Exentrex inc.
www.entrex.co.jp
inas@atelier.com