

Gring and Woodin's
Adventure
in Water Kingdom
5



The fifth
issue
June 2014

The story so far

On the way to see Dr. Imai to discuss the Water Kingdom, Gring and his friends met Kota, the bigfoot, the gatekeeper to the secret path, and arrived at the doorstep of Dr. Imai's house.



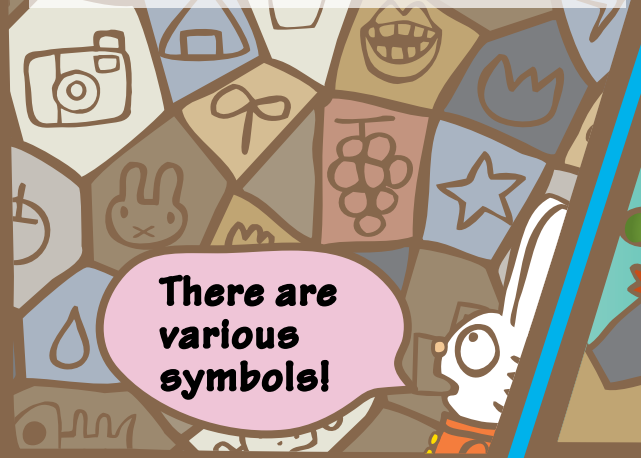
Are we??

Gring and friends arrived at quite a rocky place.

Here we are.

You can read back issues on the Asahi Glass Foundation Web Page listed on the last page.

They looked the rocks closely...



There are various symbols!

Then Woodin found a rock with some writing.



Look! There is something written here!

What do plants need to grow?



You should choose the answers from these symbols!
You need to answer correctly to be allowed to enter.



Let's work together!



I know! The sun and water!

Hmm... Plants grow with sunlight! In addition, we water them every day!



So... Here's... the sun!

Gring pushed the symbols of the sun and water.

Water symbol is over there!



The rock door opened for them.

Rumble, Rumble

We did it!!



Let's go inside.

It's pitch dark...



Dither, Dither

Oh... I forgot to turn on the light...

.....



Let me turn on the light for you! I can see in the dark.

I'm a cat! That's why.



Click

Thank you.

Great.
So where
are we?



They are in a room that
looks like a big box.



Touch

Clatter

Huh?
What's
going on?



Suuuurge! !?

It's going
upward!?



Awwwwwww!!



Arrived... Oh?

Ding

It was a world
of green.

Go straight.
Then you will
find Dr. Imai.

Unlike the world outside,
the air is very fresh here.
That's why there are so
many plants!
Now my role is over.
Have a safe trip!

Thank you
Kota,
the bigfoot!
From here on,
I'll guide you!

Thanks!
Bye!

A beautiful bird.

The air is
refreshing!

Oh Ima-Spider ♪
Dr. Imai is waiting for you ♪
In study zone find her soon ♪



La, la, la



hurly-burly

There she is!!!



Ah, you guys!
I have been
worried about
you.
Welcome to
Imai Dome!

WELCOME!



Mr. Water Cat,
I understand
your homeland,
the Water Kingdom
is in serious trouble.

Yes...



Actually... There are
flowers and woods that
are ill like Woodin, and I need
to take care of them...
so I can't go to the Water
Kingdom with you
now...



But bring this
in lieu of
me coming.

What???





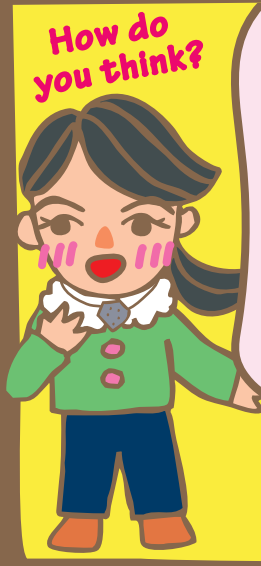
She is little Ima,
the talking doll that
shares my
knowledge.
When you have a
problem, talk
to her.
You will
find her helpful.



Dr. Imai
We brought the
stone necklace and
magical heavy-duty
coat for you!

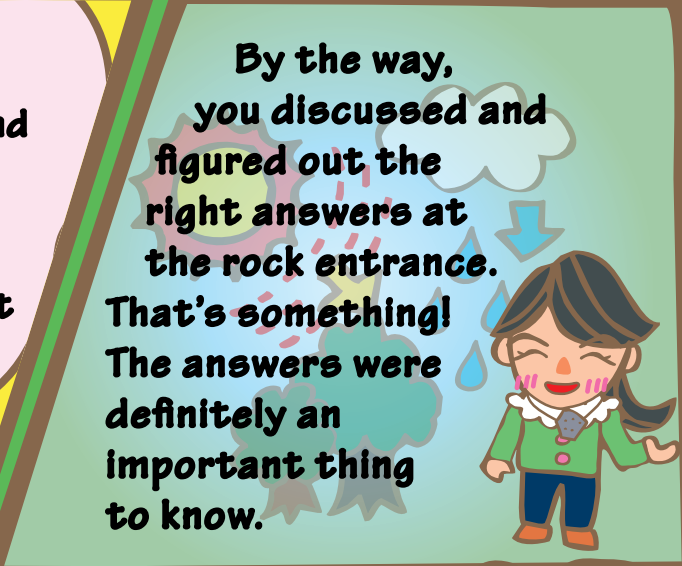
Little Ima...

*The stone necklace contains the voices of fish.

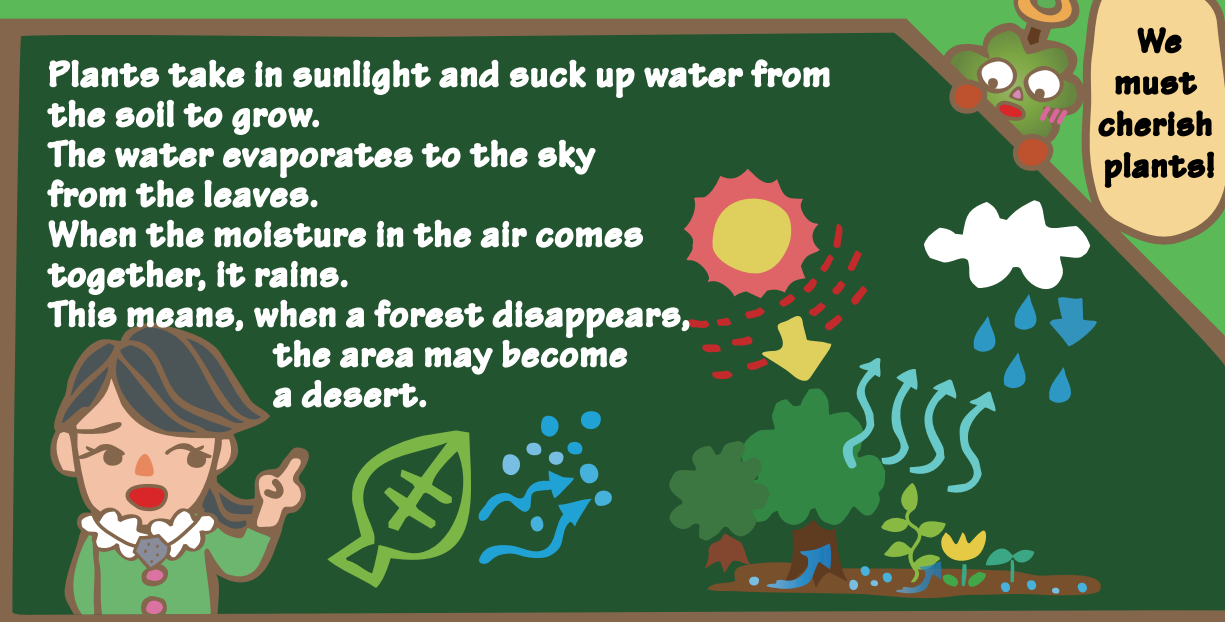


How do
you think?

Oh! Thank you!
So you met
Kawajii - elf, and
Minami-chan!
They are
interesting
persons, aren't
they?



By the way,
you discussed and
figured out the
right answers at
the rock entrance.
That's something!
The answers were
definitely an
important thing
to know.



Plants take in sunlight and suck up water from
the soil to grow.
The water evaporates to the sky
from the leaves.
When the moisture in the air comes
together, it rains.
This means, when a forest disappears,
the area may become
a desert.

We
must
cherish
plants!

The inventor who created the magical heavy-duty coat (appeared in the second issue)



Minami-chan

The possessor of the stone necklace (appeared in the fourth issue)



Kawajii -elf



The next issue will be published sometime around August Please look forward to it!

**Gring and Woodin's Adventure
in Water Kingdom 5
June 2014, The Asahi Glass Foundation**



Designed by
Entrex inc.
www.entrex.co.jp
inas-a'telier.com